

Elite Facial Tissue Interfolder

Our Elite line of Facial Tissue Interfolders will meet your customers' product specifications with high quality clean-cut or tab bond tissue. These interfolders will convert 1, 2, 3, or 4-ply products with tissue or TAD base sheets and can be equipped with lotion applicators or printers. Calenders, ply-bonders and embossers can also be added for hand feel and ply bonding.

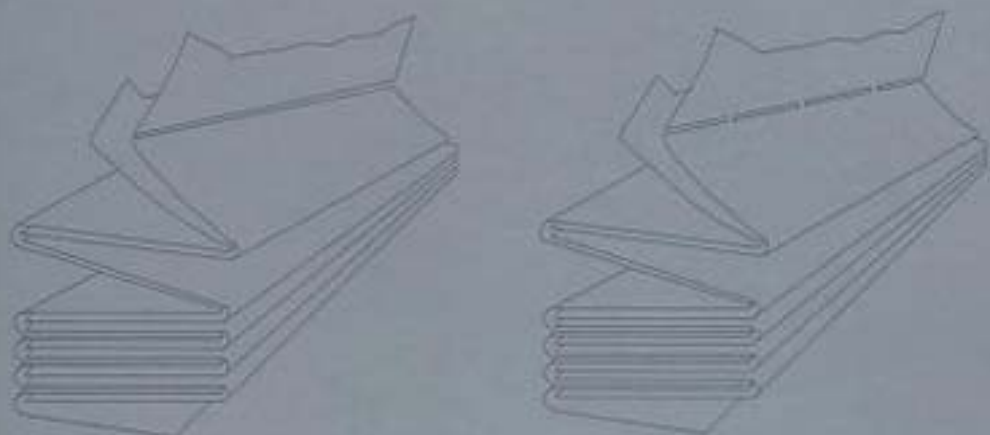
Models available for web widths up to 138" (3.5 m).



Some photos shown without guards. Guards are provided and need to be in place before operation.

Features:

- Unmatched durability and efficiency
- Plug & Produce platform for fast installation
- High speed production with exceptional product quality
- Sectionalized independent electronic drive system
- Interfolded facial tissue or bath tissue capability
- CE Compliant design



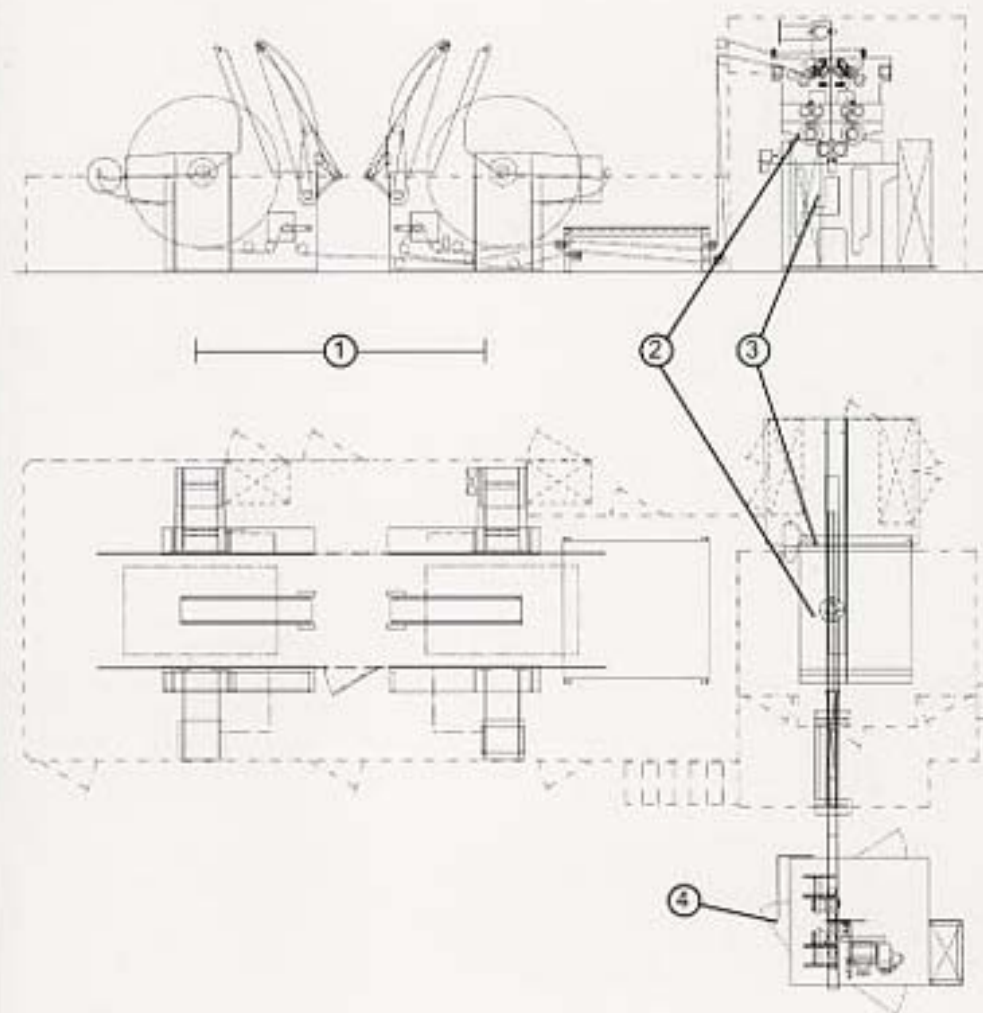
Dual-Station Calender



Compliant-Shear Cutoff System



Orbital Log Saw



Approximate floor space required (LxW): 48 ft (14.5 m) x 38 ft (11.5 m)



Standard Components:

- 1. Self-Chucking Core Ejecting Unwind Stand**
 - Automatic web tension control
 - Core-eject System for rapid roll changes
- 2. Folding Head**
 - Pneumatically-loaded ply-bond wheels
 - Compliant-Shear clean cut off system offers quick, repeatable adjustments
- 3. Automatic Separator**
 - Servo-controlled carriages allow rapid grade changes
- 4. Orbital Log Saw**
 - Programmable cut length
 - Quick change cantilevered blade mounting

Optional Equipment:

- Unwind Stand Configurations**
 - Several floor and over head loading styles available
- Embossing Units**
 - Rubber-to-Steel
 - Steel-to-Steel
- Free-Standing Ply Bond Units**
 - For use with lotionizer or other application units
 - Quick-change wheel modules
- Calendering Units**
 - Open nip and closed nip
- Laminators/Combining Embossing Units**
 - Point-to-Point
 - Nested
 - Enclosed cavity or fountain roll glue systems
- Automatic Packaging**
 - Paper banding
 - Interface to cartoner or poly overwrapper
- Log Saw**
 - Dual-lane configuration for higher output requirements
- Log Accumulator**
 - High-capacity serpentine design

Please contact your Bretting Manufacturing Sales Representative for more information.

© C. G. Bretting Manufacturing Co., Inc. January 2008 Printed in USA