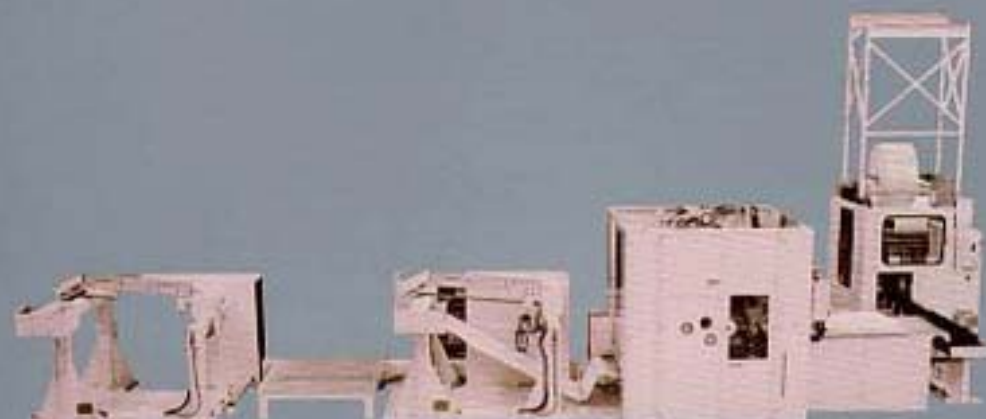


LCi Singlefold Interfolder

Our LCI Manual Singlefold Interfolders are designed for high-speed, efficient production of hand towels and facial tissue. In addition to standard paper towels, our interfolders also convert air-laid materials, through-air-dried (TAD) tissue, facial tissue, non-wovens, waxed paper, and other foldable substrates. Perfect for the smaller converter or for entering new markets, these machines are built with the same quality and durability you have come to expect from Bretting.

Available in widths up to 69" (1.75 m), these compact machines require minimal labor and floor space. 2, 3, 4-panel folding head and automatic separator upgrades are available.



Some photos shown without guards. Guards are provided and need to be in place before operation.

Features:

- Compact modular design
- Simple and reliable technology
- Engineered for floor level operation
- Plug & Produce platform for fast installation
- High-speed production with exceptional product quality
- Sectionalized independent electronic drive system
- Ability to run diverse substrates
- CE Compliant design



Mandrel Unwind Stand

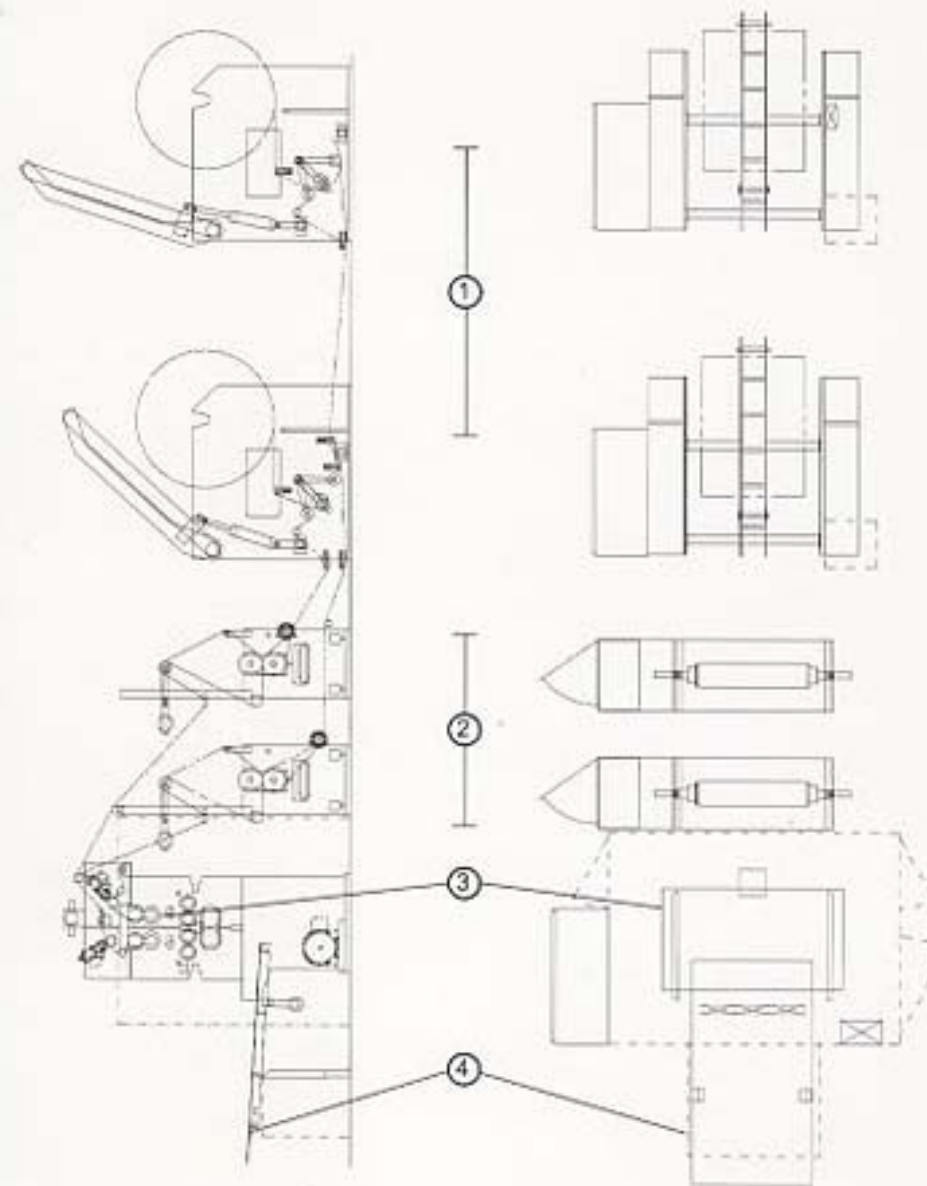


Vertical Dual-Station Embosser



In-Line Two-Seam Paper Bander

LCi Singlefold Interfolder



Approximate floor space required (LxW): 33 ft (10 m) x 10 ft (3 m)



Standard Components:

- 1. Mandrel Unwind Stand**
 - Automatic web tension control
- 2. Embossing**
 - Wrap-up detection
 - Steel-to-Steel
- 3. Folding Head**
 - Compliant Shear clean cutoff
 - Pneumatic slitters
- 4. Manual Tray**
 - Adjustable count marker system
 - Variable speed tray belts

Optional Equipment:

- Unwind Stands**
 - Several floor and overhead loading styles available
- Embossing Unit**
 - Rubber-to-Steel
- Calendering Units**
 - Open nip and closed nip
- Laminators/Combining Embossing Units**
 - Point-to-Point
 - Nested
 - Enclosed cavity or fountain roll glue system
- Automatic Separator**
- Orbital Log Saw**
 - Dual-lane configuration for higher output requirements

- Packaging**
 - Hand-fed bander
 - Hand-fed overwrapper
 - Press Table

C. G. Bretting Manufacturing Co., Inc.

3401 Lake Park Road • Ashland, WI 54806 USA • Tel: 715.682.5231 • Fax: 715.682.4138
E-mail: sales@bretting.com • www.bretting.com



Please contact your Bretting Manufacturing Sales Representative for more information.

© C. G. Bretting Manufacturing Co., Inc. January 2008 Printed in USA

