

125 Years of Delivering on Our Promise



1890

**bretting**

2015

5 Generations Committed to Quality

# Historical Timeline

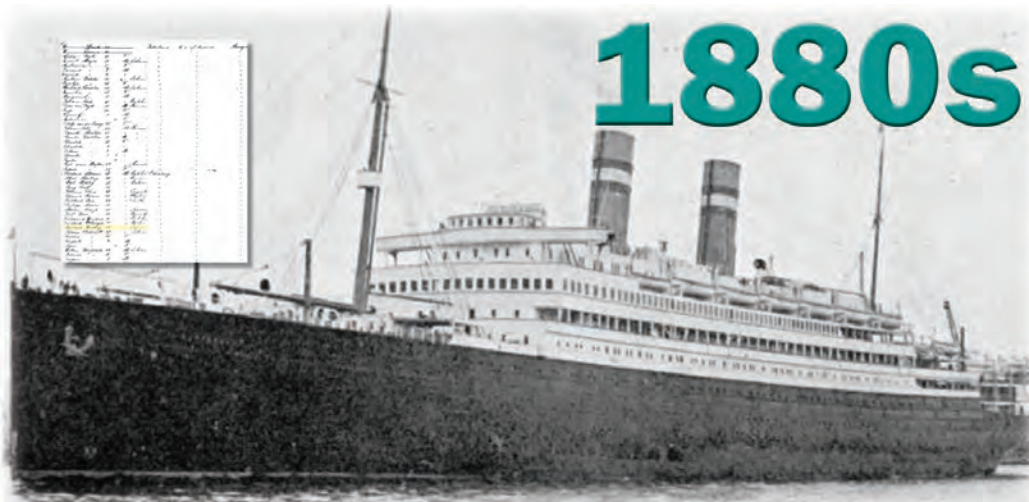


# 1880s

MAY 1, 1880

AT 26 YEARS OLD, CHRISTOPHER GEORGE BRETTEING ARRIVES ON THE SHORES OF NEW YORK ON THE TSS ROTTERDAM.

HE IS REGISTERED AS CHRISTOPH BRETTEING ON THE NEW YORK PASSENGER LOG.



1890

CHRISTOPHER GEORGE PURCHASES PARISH MANUFACTURING COMPANY.

WITH 500 EMPLOYEES, THE COMPANY MANUFACTURES MACHINERY AND EQUIPMENT FOR THE SAWMILL INDUSTRY.

THE COMPANY IS RENAMED C. G. BRETTEING MANUFACTURING COMPANY.



# 1890s

# 1900s



MAY 31, 1904

CHRISTOPHER GEORGE PASSES AWAY AT THE AGE OF 50 IN ST. LOUIS, MISSOURI, LEAVING BEHIND HIS WIFE, JANE, AND THREE SONS RALPH (17), HOWARD (10), AND LYMAN (4).

JANE AND RALPH ASSUME MANAGEMENT OF THE COMPANY.



Ralph Christopher - Age 17 (known as Ralph)



William Howard - Age 10 (known as Howard)



Henry Lyman - Age 4 (known as Lyman)

1907

THE COMPANY IS INCORPORATED. JANE BRETTING, PRESIDENT C.A. LAMOREUX, VICE PRESIDENT SAM WHEELER, SR., SECRETARY RALPH BRETTING, GENERAL MANAGER



1901 into the 1920s Bretting family home at 222 Prentice Avenue Ashland, Wisconsin



Dear Barbara & Tad -

Here is the picture of Grandfather C. G. Bretting, which I promised you. A very, very handsome man, wasn't he?

I can't find any pictures of Grandmother Jane (formerly Jane Richards) who really ruled the roost, I was told!

My "Howdie" (as I called him) used to enjoy and laughed like crazy, telling me how "Mutter" brought up her three strapping sons after husband, Chris, passed away so suddenly (when they were on vacation in her hometown of St. Louis) of a heart attack. And Howdie always said his mother was actually furious with Chris for dying. She never forgave him for dying and leaving her with three boys to bring up by herself.

Howdie always loved telling me how "spunky" Mutter was. She was going to show those big guys that lil' ol' Jane wasn't afraid of any of them! Howdie almost always laughed himself into hysterics when he told me how she kept a long black heavy strap by the kitchen door and one time as each big teenager came through the door, he was belted but good!! So naturally each one would yell, "Whaddy'a doin' that for? What did I do now?"

Then, she was really small and short at that time and less than half their size would lift that big strap and give them another good whack and yell at them with, "This is to let you guys know that you better not get out of line around here - even if I am smaller!"

My Howdie always had a good laugh telling me this. He admired his mother's courage and felt that she was so frightened at the job ahead of her, of rearing these three "big boys," that she really was not as brave as she pretended.

I think this is funny too. This is only one of the many anecdotes about life with Jane and her boys. I, for one, think she did a marvelous job all by herself. It must have been very, very hard for her. She was most interesting!

Verna Bretting (Howard Bretting's wife)



# 1910s



1916

THE COMPANY HAS ITS OWN BLACKSMITH SHOP WHICH KEEPS THE COMPANY'S HORSEPOWER NEEDS GOING.

## HORSES SHY, RUN INTO BANK BLD'G

O. G. Bretting Company Team Smash Lamp Post in Center of Ellis Avenue Then Ran Into Bank Building.

When the C. G. Bretting Company horses filed last evening shortly after 7 o'clock as they were coming down Ellis avenue near the Soo railroad tracks attached to a heavy wagon, they started on a lively gallop, running into the lamp post in the center of the avenue and smashing it. This however did not stop the horses in their wild race but they kept right on going until the Ashland National Bank was reached. The horses ran upon the sidewalk at this place and in turning quickly to one side the wagon was thrown onto the side of the building doing a little damage. The runaway was stopped at this juncture.  
The driver who rode the greater part of the distance on the wagon was not injured.



EARLY 1920S  
AS THE  
LUMBER  
INDUSTRY  
SLOWS DOWN,  
THE COMPANY  
BEGINS  
CATERING  
TO THE  
NEEDS OF  
THE GROWING  
MINING AND  
SHIPPING  
INDUSTRY.

# 1920s



Bretting manufactured mining carts.



Late 1800s/early 1900s steam engine

1921 - Streetcars used by Bretting commuters had quite a challenge after this snow storm.



1920s - Jane and Lyman move into the Knight Hotel.



1926  
LYMAN BRETTING RETURNS TO ASHLAND WITH AN ENGINEERING DEGREE FROM MASSACHUSETTS INSTITUTE OF TECHNOLOGY (MIT) AND WORKS FOR HIS BROTHER, RALPH, WHO IS NOW PRESIDENT.

1929  
LYMAN ASSUMES MANAGEMENT OF THE COMPANY AS PRESIDENT AND GENERAL MANAGER AFTER RALPH MOVES TO GREEN BAY, WISCONSIN.

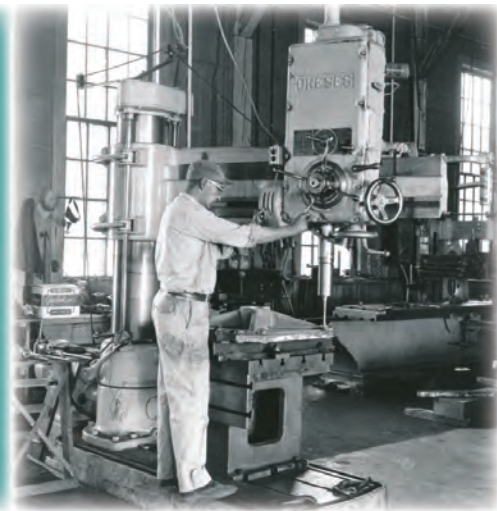


# 1930s



1930s

BRETTING WORKS WITH MARATHON PAPER MILL TO MANUFACTURE NAPKIN FOLDERS DESIGNED BY MARATHON.



## \$50,000 Blaze Hits Ashland Iron Works

ASHLAND, Wis., Jan. 22 (AP) — Fire destroyed the casting house of the Bretting Iron Works yesterday with a loss estimated at \$50,000.

The blaze was discovered a few minutes after 5 p. m.

Ashland firemen fought the fire for seven hours in zero weather. A strong wind made their work difficult.

The frame structure, 50 by 150 feet, was leveled. Other buildings of the company, including the machine shop and office, were not damaged. Cause of the fire has not been determined.

1948

A FIRE DESTROYS THE CASTING HOUSE.



# 1940s

1950s

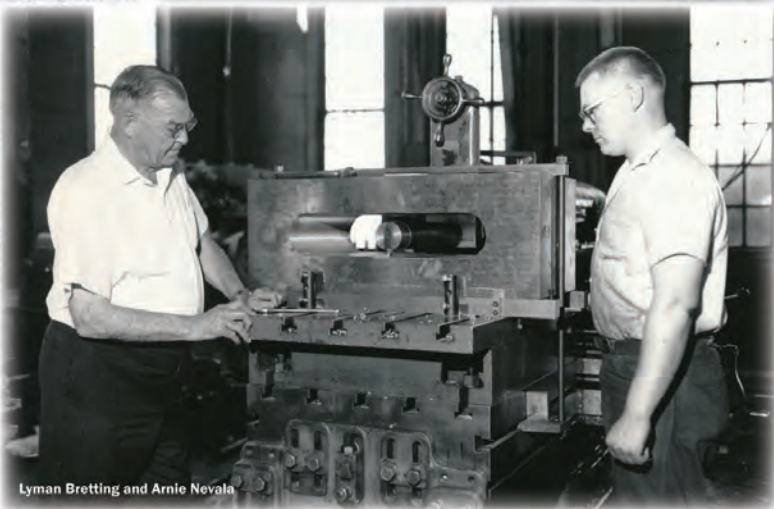
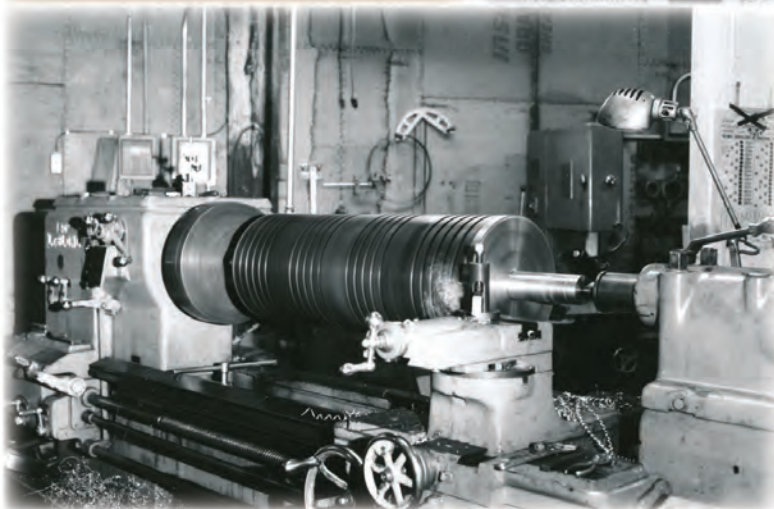
BRETTING EXPLORES OTHER INDUSTRIES AS THE MINING INDUSTRY SLOWS DOWN.

1958

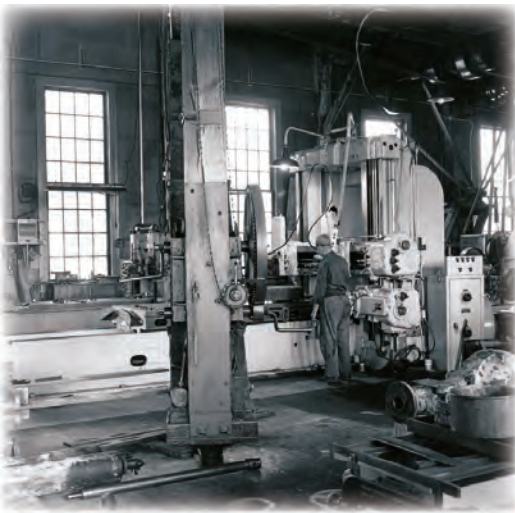
TAD BRETTING RETURNS TO ASHLAND WITH A BUSINESS DEGREE FROM THE UNIVERSITY OF NOTRE DAME AND JOINS THE FAMILY BUSINESS.



# 1950s



Lyman Bretting and Arnie Nevala

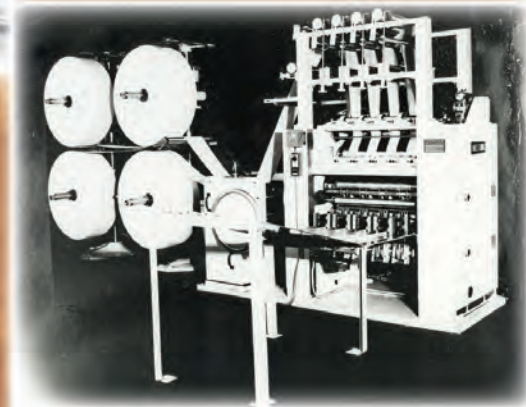


# 1960s



1960s

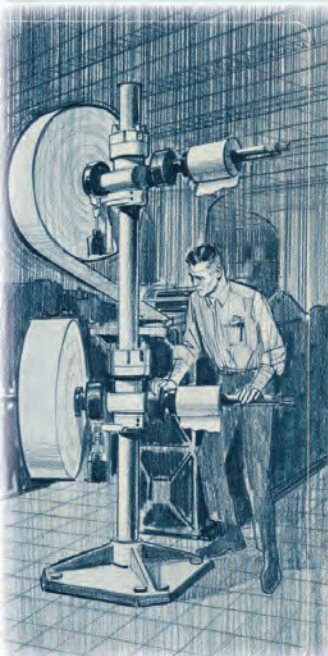
BRETTING CONCENTRATES ON THE DESIGN AND MANUFACTURE OF PAPER CONVERTING EQUIPMENT.



1965

LYMAN RETIRES AND TAD TAKES OVER AS CEO WITH A DOZEN WORKERS. TAD'S WIFE, BARBARA, IS SECRETARY.

BRETTING SHIPS THEIR FIRST MANUAL NAPKIN FOLDER.



Save Up To 90 Minutes Every Working Day... with the new **Bretting Turret Unwind Stand**

# 1970s

1970s

BUSINESS BEGINS TO GROW INTERNATIONALLY AND THE PRODUCT LINE EXPANDS.

1970s

SEVERAL ADDITIONS INCREASED THE SIZE OF THE FACILITY BY 32,000 SQUARE FEET.

## Bretting is world's largest napkin equipment maker

The C. G. Bretting Manufacturing company, the major manufacturer of paper napkin folding, printing and packaging equipment in the entire world—a fact unrealized by many area residents. The company has equipment distribution centers in Canada, Europe and Australia.

Of added interest is the fact that members of the Bretting family, now in the third generation, have directed the affairs of the company from the beginning.

The company was started in the early 1800's by the North Star Iron Works of Minneapolis. The company at that time was called the Parrish Iron Works. The company was purchased by C. G. Bretting around 1890, and was operated by him until his death in 1904. C. G. Bretting's wife, Mrs. Jane Bretting, continued to run the business along with her son Ralph, who was only 16 years old at the time. Ralph later took an active part in area affairs as chairman of the Ashland County Board.

The company was incorporated in 1907 with Mrs. Jane Bretting, widow of the founder, as president; C. A. Lamoureux vice president; and Sam Wheeler Sr. as secretary.

Ralph Bretting was named general manager.

In 1928, Lyman Bretting, younger brother of Ralph, returned after graduation from the Massachusetts Institute of Technology and went to work for his brother Ralph.

In 1829 Ralph moved to Green Bay, and Lyman became president and general manager. Lyman Bretting continued in that capacity until his retirement in 1968, and is still active with the company on a consulting basis.

Upon the retirement of Lyman Bretting, Lyman's son, Tad Bretting became president and general manager, representing the third generation of the family.

The company was originally engaged in the making and repair of saw mill equipment. When the lumber industry declined, the company went into the manufacture and repair of mining equipment and repair of ore-boats.

In 1929 the company manufactured its first paper napkin folding machine for the Marathon Paper Mills.

The Bretting company continued to manufacture folders for the Marathon company, and in 1968

decided to design and manufacture these machines for other companies in the paper industry.

Today, the manufacture of napkin folding, printing, and packaging equipment is the primary business of the company.

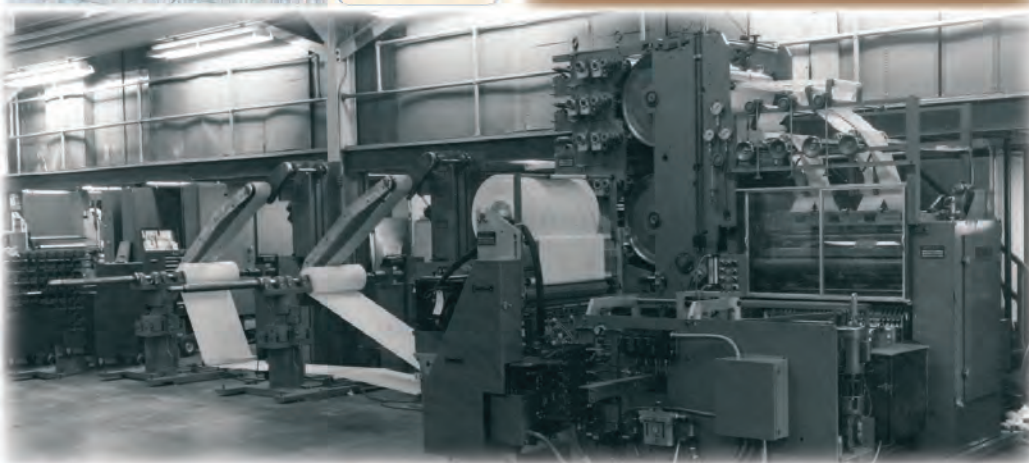
The Bretting company has become the major manufacturer of this equipment in the world, and now has equipment in operation with all major manufacturers of napkins in the United States, with equipment distribution centers in Canada, Europe and Australia.

At present the Bretting company employs approximately 60 people. Of this total, 14 persons are engaged in engineering and design work.

Officers of the company are Tad Bretting, president and general manager; John Trogan, vice president and chief engineer; Robert Bond, treasurer and chief accountant; and Barbara Bretting, secretary.

The company is just completing construction of a plant addition that will increase manufacturing space by approximately 50 percent.

15-PROGRESS V-The Daily Press, Ashland, Wis.-March 5, 1977



1974

THE AUTOMATIC NAPKIN FOLDER IS INVENTED.

THIS ALLOWS BRETTING TO LEAD THE INDUSTRY AS THE DEMAND FOR DISPENSER NAPKINS INCREASES.

# 1980s



1980

BRETTING SHIPS THEIR FIRST AUTOMATIC INTERFOLDER.

1984

THE PLANT EXPANDS BY 30,000 SQUARE FEET.

## Bretting expansion remains on schedule

By David Christenson  
The latest expansion at C.G. Bretting Manufacturing Co. Inc. in Ashland is still set for a Nov. 1 completion deadline, despite weather delays, according to company spokesman Wayne Peterson.

With a price tag of over \$1 million, the new building at the company's Lake Park Road plant will add 30,000 square feet of space for assembly and machining of Bretting's paper product conversion equipment.

For now, no additional employees will be needed for operations in the new building, Peterson said. If orders continue to increase, however, the company anticipates in time to be able to increase its employment.

Production difficulties have been caused by lack of working space, not lack of manpower, he said.

Until the new building is operational, Bretting's product — primarily machinery lines for processing of paper napkins and toweling — will be assembled in what Peterson termed a "congested" area. The new space, designed to resemble warehouse area, will allow a faster flow of product through the steps toward completion.

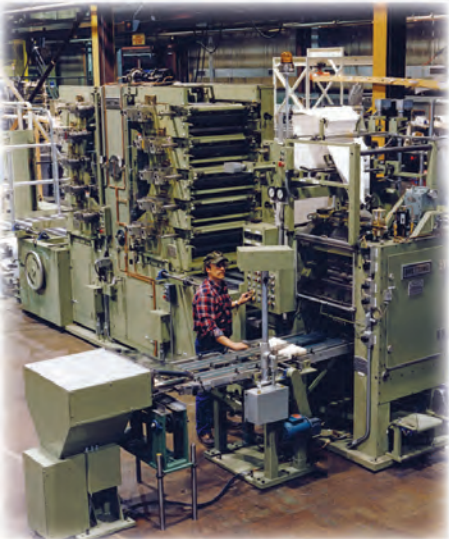
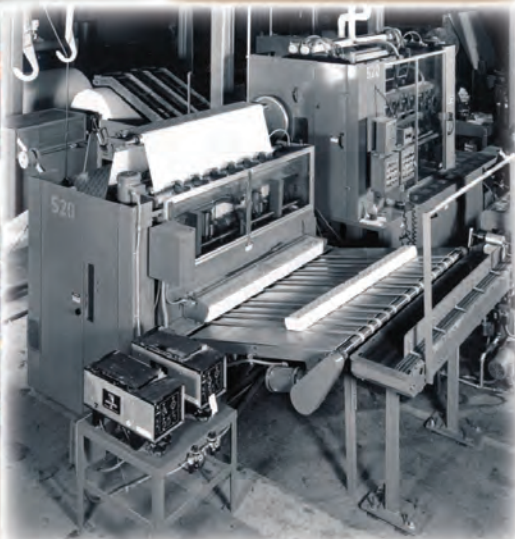
Shipping by truck will also be made easier by a sunken loading dock on the south side of the building, which will cut down the need for lifting the



machinery. The most visible and unusual features of the project are the exterior walls. Most new industrial structures in this area have steel exteriors, Peterson said, but the Bretting Co. opted for concrete, which has easier maintenance.

Sections of the walls were pre-cast in 17,000 pound slabs, 26 feet tall and eight feet wide, and were erected by lifting with an 80-ton crane and welding in place. The slabs contain layers of styrofoam sandwiched between three-inch layers of concrete. Steel was used for the rear wall on the lake side.

Work on the project is primarily by local firms, with Frank Tomlinson Co. Inc. as general contractor.



1986

EXPANSION OF THE PLANT INCREASES THE FACILITY SIZE TO 120,000 SQUARE FEET OF OFFICE SPACE AND 100,000 SQUARE FEET OF MANUFACTURING SPACE WITH 220 EMPLOYEES.



1989

TAD IS PRESENTED THE UNITED STATES SMALL BUSINESS PERSON OF THE YEAR AWARD BY PRESIDENT GEORGE H. W. BUSH.



# 1990s



1993

AN ADDITION OF 56,000 SQUARE FEET IS ADDED TO THE MACHINE SHOP.



David Bretting  
President and Chief Executive Officer



Paul Bretting  
Chief Operating Officer



1997

TAD TURNS OVER THE COMPANY TO HIS SONS, DAVID AS PRESIDENT AND CHIEF EXECUTIVE OFFICER AND PAUL AS CHIEF OPERATING OFFICER.

1999

AN ADDITION OF 62,500 SQUARE FEET IS ADDED TO THE ASSEMBLY AREA.



1999

TAD IS INDUCTED INTO THE PAPER INDUSTRY INTERNATIONAL HALL OF FAME.





2000

THE ADDITION OF THE FRONT OFFICE IS COMPLETE.



Tad and Barbara Bretting with their grandchildren.



# 2000s



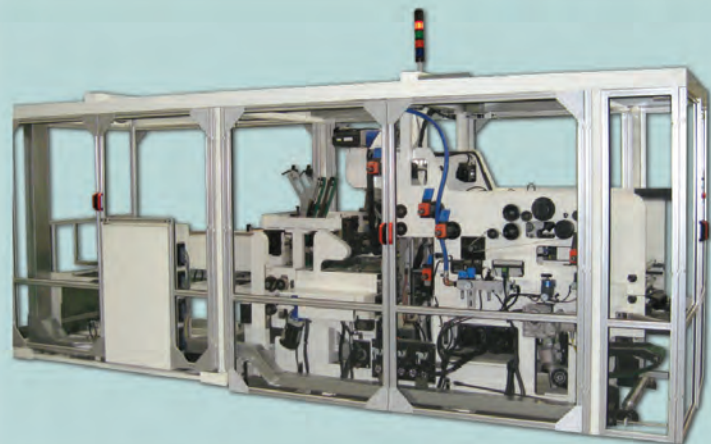
2001

CONTRACT MANUFACTURING SERVICES (CMS) EXPANDS ITS OFFERING TO CUSTOMERS THROUGHOUT THE MIDWEST BY PROVIDING FABRICATION, MACHINING, AND ASSEMBLY TO A VARIETY OF INDUSTRIES.



2004

OUR LEAN JOURNEY BEGINS. LEAN IS A BUSINESS PHILOSOPHY USED TO MAXIMIZE CUSTOMER VALUE WITH MINIMIZING WASTE IN DESIGN, MANUFACTURING, DISTRIBUTION, AND CUSTOMER SERVICE PROCESSES.



2009

BRETTING ACQUIRES POLYWRAPPER TECHNOLOGY.



2010

BRETTING MANUFACTURING RECEIVES QUALITY SYSTEM CERTIFICATION.

THIS DESIGNATION VALIDATES COMPANY COMMITMENT TO QUALITY FOR DESIGN, MANUFACTURING, AND SERVICES.



MARCH 5, 2011

BRETTING ACQUIRES S&S SPECIALTY SYSTEMS IN IRON RIVER, WISCONSIN, OFFERING EXPANSION INTO THE NON-WOVENS MARKET.

CONCURRENTLY, THE COMPANY ENTERED THE BAG MACHINE MARKET USING S&S AS THE CENTER OF OPERATION.

2014

VISITORS FROM AROUND THE WORLD REGULARLY VISIT BRETTING MANUFACTURING.

PAST PROMINENT VISITORS INCLUDE WISCONSIN GOVERNOR TOMMY THOMPSON IN 1998 AND MORE RECENTLY WISCONSIN LIEUTENANT GOVERNOR REBECCA KLEEFISCH IN 2014.



Ricky Bretting Mechanical Engineer

Paul Bretting Chief Operating Officer

David Bretting President and Chief Executive Officer

Shawn Bretting Mechanical Engineer

2015

BRETTING MANUFACTURING CELEBRATES 125 YEARS IN BUSINESS AND FIVE GENERATIONS.

WITH OVER 400 EMPLOYEES, THE COMPANY SUPPLIES PAPER CONVERTING EQUIPMENT TO 39 COUNTRIES.

